

Municipality of Chatham-Kent

Health and Human Services

Housing Services

To: Mayor and Members of Council
From: Kim Crew, Director, Housing Services - Operations
Date: August 11, 2025
Subject: Chatham-Kent's Municipal Encampment Protocol and By-Law

Recommendations

It is recommended that:

1. The attached by-law contained in Appendix "A" of this report, being a by-law to regulate the use of certain public property within the Municipality of Chatham-Kent, related to the Municipality's Encampment Response Protocol, be approved.
2. By-law enforcement services for the Encampment Response Protocol be single-sourced to Royal Protective Services, at a total value not to exceed \$238,882, including HST, to be funded from the Housing Services Operation Reserve 17316.

Background

At its November 4, 2024 meeting, Council approved an [Interdepartmental Protocol for Responding to Encampments of People Experiencing Homelessness on Public Land in Chatham-Kent \(Encampment Response Protocol\)](#). The protocol defines an encampment as "a temporary physical structure built as a shelter or dwelling and located on municipal property (that is not rented by the occupants of the encampment)."

The protocol, as approved on November 4, 2024, contains criteria that encampments must meet to avoid relocation and indicates that structures must not be located:

- On or within 100 metres from municipal playgrounds, water parks, splashpads, beaches, or sports fields.
- On or within 100 metres from any elementary schools, childcare facility, assisted living facility, or other health or social service facility providing support or care services to youth or vulnerable populations including shelters.
- Within 10 metres of any private property line.
- On or within 5 metres of sidewalks or pedestrian paths.
- On or within 25 metres of any cemetery.
- On or within 5 metres of an off-leash dog area.

- On or within 5 metres of any community garden.

At a special meeting held on July 28, 2025, Council considered a motion containing the following eleven recommendations regarding encampments in Chatham-Kent:

1. The current encampment protocols be amended for the City of Chatham to require encampments be:
 - a. 100 metres away from any private property line with a habitable residence;
 - b. 100 metres away from any business;
 - c. 25 metres away from construction sites; and,
 - d. 10 metres away from a recreational path.
2. Administration continues to work in collaboration with ROCK to engage with individuals and prioritise them for services and housing as they become available.
3. Administration voluntarily transitions as many homeless individuals as possible to the new transitional cabins program thereby diminishing the number of people in encampments.
4. Administration actively pursues all options to reduce and end encampments in Chatham-Kent. This will include, but not be limited to, exploring opportunities to immediately deliver permanent supportive housing, and increased transitional cabins. A report back from administration on possible options and costing be returned to Council as soon as possible. The same recommendations should be presented to the provincial and federal government for financial assistance.
5. Administration explore local housing options that could be quickly converted into supportive housing and report back on feasibility and costs.
6. The current encampment protocols be amended to include a provision that there is to be no more than one tent per person, and that all personal items be stored within a tent (with exception of a bicycle and small structures for pets); and items in contravention to this will be removed following notice. Administration be directed to enhance the frequency of refuse collection at encampment sites.
7. Administration bring back a by-law as soon as possible to allow for the enforcement of the approved protocols to begin.
8. Administration hire an additional temporary by-law officer to enforce these amendments. Administration to report back recommendations on numbers and costs based on the approved protocol amendments.
9. CK Police install CCTV cameras where operationally required at the sole discretion of Chatham-Kent Police.
10. Administration bring a report back to the September 8, 2025 Council meeting with a plan to engage partners from mental health, medical supports, addictions, housing, ROCK that could provide supports (including crisis support alongside

enforcements) to the people staying at encampments. This report should include creative solutions and best practice examples used across the province, and will also include related costs to CK.

11. Regular neighbourhood communication begins immediately with appropriate members of administration, residents and business owners in the 325 Grand Ave E, Chatham property area until further notice.

All recommendations, with the exception of recommendation number #1, were approved by Council on July 28, 2025. The following motion regarding recommendation # 1 was passed at the meeting:

“That recommendation 1 be referred to administration in order to ensure an informed and transparent decision process to the August meeting where Administration can report back with locations that fit within the setback radius; permitting the public to provide feedback and deputations on the implications of setback distances in the by law.”

Specifically, administration was asked to identify properties within Chatham that would fit within the setback distances identified in the protocol if the distance to private property was changed from 10 metres to 25 metres, 50 metres or 100 metres.

The purpose of this report is to:

- 1) Identify municipal properties that would meet each of the aforementioned setback distances.
- 2) Request that the by-law attached as Appendix A be approved.
- 3) Receive approval to single source by-law enforcement services.
- 4) Provide an update regarding increased refuse collection at the Public Utilities Commission encampment site.

Comments

Setbacks from Private Property

Chatham-Kent's Geographic Information System (GIS) mapping team analyzed all municipal land parcels in Chatham based on the parameters outlined in the recommendation, including all other parameters specified within the protocol.

In addition to the criteria outlined by Council, several logistical considerations must be taken into account when evaluating potential sites. The location should not be within a flood plain to ensure safety and long-term viability. It must be accessible to individuals with mobility challenges and capable of supporting the installation and servicing of portable washroom facilities (if needed). The site must also accommodate the placement of a dumpster, along with the necessary equipment for regular waste removal (if needed). Furthermore, it should be easily accessible to supportive social

service providers and emergency services, including police, fire, and paramedics, to ensure timely and effective response when needed.

After reviewing the list of land parcels against these additional needs, four parcels of land were consistently identified at the 25, 50, and 100 metre setback ranges, with corresponding decreasing space for an encampment.

325 Grand Avenue East

The Public Utilities Commission property, containing the Chatham Water Treatment Plant, located at 325 Grand Avenue East meets the 10 metre and 25 metre setback criteria and offers ample accessible space for both individuals and service providers. Importantly, this site is not situated within a flood plain, which makes it a safer and more stable option for long-term use. Any transition to a new use would require a coordinated and respectful relocation process for the individuals at the current encampment on this site, in accordance with existing protocols and community engagement practices. At a 50 metre setback, the available area for an encampment is compressed against the fence on the north and south sides of the fenced plant area. A 100 metre setback is not possible as it is within the fenced plant area. A map of this site is attached as Appendix B.

Water Tower Site, Richmond Street West

The Chatham Elevated Water Tower site at 545 Irwin Street, just north of Richmond Street also presents a viable option in terms of physical accessibility for individuals and service providers. The surrounding land is open and usable, which could support an encampment or service delivery. Despite these advantages, the site's distance from essential social services significantly reduces its appeal. As well, this site holds the largest bulk water station in Chatham-Kent with 6098 fills in 2024, and is frequently accessed by heavy trucks and equipment such as transports with tankers, tractors, and vector trucks. Individuals may be reluctant to relocate to this area due to the isolation and lack of proximity to supports they rely on, which could impact both initial uptake and long-term stability. Once factoring in the turn around loop for water haulers' significant safety concerns, the potential of an encampment at this site is severely limited and not recommended. A map of this site is attached as Appendix C.

Thames Grove Conservation Area, located on Grand Avenue East

The Thames Grove Conservation Area, located south of Grand Avenue East at 34 Kingsway Drive, offers sufficient space across all setback ranges. However, the site poses several challenges. The area lies within a flood plain, raising concerns about safety during periods of heavy rainfall, deep snowfall, or seasonal flooding. Additionally, this site is host to a disc golf course, which spans a majority of the area, including a naturalized area. The course has active usage, including organized leagues. This means that the site cannot be considered as an encampment location due to the proximity to a sports field. A map of this site is attached as Appendix D.

O'Neill Nature Preserve

The lands comprising the O'Neill Nature Preserve (formerly known as Paxton's Bush) have been excluded from this analysis as it is Administration's recommendation that outdoor sheltering by unhoused persons should not be permitted on this property due to the fact that these lands were transferred to the Municipality subject to specific legal conditions governing their use. These conditions provide specific limitations on use of the property, including that the property is to be used for specific passive uses, which do not include outdoor sheltering.

By-Law and Enforcement

As specified in recommendation #7, Appendix A contains the proposed by-law to regulate the use of certain public property within the Municipality of Chatham-Kent, related to the Encampment Response Protocol. Administration requests approval of this by-law to ensure that the parameters identified within the Municipality's Encampment Response Protocol can be enforced.

Recommendation #8 identifies the need to hire by-law officers to enforce an encampment by-law. Administration recommends single-sourcing by-law enforcement to Royal Protective Services to December 31, 2026. This single source would meet section 'h' of the Procurement By-law #205-2023, where an unforeseeable situation of urgency exists and competitive methods of purchasing would result in the Municipality's inability to obtain the deliverable in time. For clarity, this exception cannot be used where the urgency was foreseeable. Cost details related to the by-law enforcement services are outlined in the Financial Implications section of this report.

Refuse Collection at the Public Utilities Commission (PUC) Water Treatment Plant Site

Once it became known that individuals had established an encampment on the PUC Water Treatment Plant site, Administration made arrangements for a large garbage dumpster to be placed on site to minimize refuse in the area and for the dumpster to be emptied twice weekly. As specified within recommendation #6, staff have increased the refuse collection at this location to three times per week effective July 31, 2025. The costs associated with the increased refuse collection are minimal and will be funded through previously approved operating budgets.

By-Law and Encampment Protocol

Should Council decide to make any amendments to the existing Encampment Protocol, outlined in the attached by-law regulating the use of certain public properties within the Municipality of Chatham-Kent, a formal motion must be passed to approve those changes.

Council Term Priorities

This report supports the following Council Term Priorities:

			
Deliver Excellent Service	Promote Safety & Well-Being	Grow Our Community	Ensure Environmental Sustainability
	2a		

Consultation

The Manager of Data and Integration, Information Technology and Transformation along with a GIS Mapping Technician verified and reviewed mapping data to determine land parcels within the specified parameters.

Legal Services prepared the draft by-law and reviewed the list of land parcels provided in this report.

Planning Services was consulted on the land parcel analysis process.

A Budget Analyst has reviewed the Financial Implications section of this report.

The Manager of Purchasing and Accounts Payable was consulted on the procurement process.

The Manager, Corporate Communications, has reviewed the communications plan.

Communication

Communication on Council or administration-driven encampment-related updates will be provided through the Encampment Updates Let's Talk Chatham-Kent page as well as media releases and social media posts. Community engagement will be considered on an as-needed basis depending on unfolding circumstances. Engagement with local outreach groups, such as R.O.C.K. Missions, will be undertaken to ensure full scope communication is provided.

Diversity, Equity, Inclusion and Justice (DEIJ)

The issue of homelessness in Chatham-Kent is complex and growing. Increasing numbers of individuals are experiencing homelessness, many for the first time, due to rising housing costs, limited shelter capacity, and systemic barriers. Those residing in encampments often include Indigenous peoples, racialized individuals, 2SLGBTQIA+ persons, and people living with disabilities, mental health conditions, or substance use

challenges. These populations face compounded vulnerabilities that require a response grounded in principles of diversity, equity, inclusion, and justice (DEIJ).

Repeated displacements of homeless encampments may lead to significant unintended consequences. These moves disrupt access to essential services, sever fragile support networks, and increase the risk of harm to individuals already in crisis. In addition, such actions may deepen mistrust between encampment residents and municipal authorities, making future engagement and service delivery more difficult.

A DEIJ-informed approach does not ignore community concerns. Instead, it seeks to balance those concerns with the rights and dignity of all residents. This includes exploring alternatives to displacement, such as transitional cabins, culturally safe outreach, and trauma-informed care. It also involves engaging encampment residents in decision-making processes and recognizing that homelessness is not a personal failure, but a systemic issue. By embedding DEIJ principles into the response, Chatham-Kent can move toward solutions that are not only more compassionate but also more effective and sustainable.

Financial Implications

Administration has received cost estimates from Royal Protective Services for by-law enforcement. The estimated costs for two security guards at 40 hours per week each plus the use of a vehicle until December 31, 2026 totals \$ 238,882 including HST. After accounting for the HST rebate, the net cost to the GL would be \$215,121. This amount would be funded through the Housing Operations Reserve (17316).

If approved, administration will review and analyze by-law enforcement needs throughout 2026 and will include recommendations within the 2027 municipal budget process as required.

Prepared by: Kim Crew, Director, Housing Services

Reviewed by: Jodi Guilmette, General Manager, Health and Human Services

Consulted and confirmed the content of the consultation section of the report by:

Bruce McAllister, General Manager, Development Services

Gord Quinton, General Manager, Finance, Budget, Information Technology and Transformation

Edward Soldo, General Manager, Infrastructure and Engineering Services

Emily Crawford, Solicitor, Legal Services

Erica Hoppe, Manager, Data and Integration Information, Technology and Transformation

Marissa Little
Budget and Performance Analyst
Budget and Performance Services

Matthew Smith
Manager, Purchasing and Accounts Payable
Financial Services

Eric Labadie
Manager, Corporate Communications
Corporate Communications

Attachments: Appendix A – By-Law to regulate the use of certain public property within the Municipality of Chatham-Kent for the protection of persons and property and to promote safe use and enjoyment
Appendix B – Map of 325 Grand Avenue East, Chatham
Appendix C – Map of 545 Irwin Street, Chatham
Appendix D – Map of 34 Kingsway Drive, Chatham

C: Bruce McAllister, General Manager, Development Services

Gord Quinton, General Manager
Finance, Budget, Information Technology and Transformation

Edward Soldo
General Manager
Infrastructure and Engineering Services

Emily Crawford
Solicitor
Legal Services

Erica Hoppe
Manager, Data and Integration
Information, Technology and Transformation

Marissa Little
Budget and Performance Analyst
Budget and Performance Services

Matthew Smith
Manager, Purchasing and Accounts Payable
Financial Services

Eric Labadie

Manager, Corporate Communications
Corporate Communications

By-Law Number XX-2025
Of the Corporation of the Municipality of Chatham-
Kent

A by-law to regulate the use of certain public property within the Municipality of Chatham-Kent for the protection of persons and property and to promote safe use and enjoyment.

Finally Passed the ____ day of _____,
2025.

Whereas the *Municipal Act, 2001*, S.O. 2001, c. 25, as amended (the "Municipal Act"), provides that a municipality has the capacity, rights, powers, and privileges of a natural person for the purpose of exercising its authority and that it may do so by by-law; and

Whereas Section 10(2) of the Municipal Act provides that a municipality may pass by-laws respecting, among other things, the health, safety and well-being of persons and the protection of persons and property; and

Whereas Section 127 of the Municipal Act provides that a municipality may prohibit the depositing of refuse or debris on land without consent of the owner or occupant of the lands, and may define refuse" for such purpose; and

Whereas Section 425 of the Municipal Act provides that a municipality may pass by-laws providing that a person who contravenes a by-law of the municipality passed under the Municipal Act is guilty of an offence; and

Whereas Council for the Municipality of Chatham-Kent deems it appropriate to enact a by-law for the purpose of regulating the use of municipal lands for the purpose of safe use and enjoyment of such lands and protecting people and property;

Now Therefore the Council of The Corporation of the Municipality of Chatham-Kent enacts as follows:

1. Title

1.1. Short Title. This by-law may be cited as the “Public Space Use By-law”.

2. Definitions

2.1. Meaning. In this by-law, the following definitions shall apply.

“**Council**” means the municipal council of the Corporation of the Municipality of Chatham-Kent.

“**Encampment**” means a physical structure built as shelter or dwelling, including of a temporary movable nature, and located on municipal property (that is not rented with the authority of the Municipality by the occupants of the encampment), including those areas occupied around an encampment.

“**Encampment Response Protocol**” means the Municipality of Chatham-Kent Interdepartmental Protocol for Responding to Encampments of People Experiencing Homelessness on Public Land in Chatham-Kent, as amended, attached hereto and forming part of the by-law, at Appendix “A”.

“**Municipality**” and “**Municipality of Chatham-Kent**” mean the Corporation of the Municipality of Chatham-Kent.

“**Municipal Property**” means all outdoor open lands and facilities owned by, leased by, licensed to, or under the management of the Municipality of Chatham-Kent that are publicly accessible and intended for general public access and use and all appurtenances thereto, including but not limited to parks, recreational areas, public squares, outdoor waiting areas, and building perimeters.

“**Officer**” means the person, or persons, who have been designated to enforce the provisions of this by-law, including such by-law enforcement officers, and includes a provincial offences officer as defined by the *Provincial Offences Act*, R.S.O. 1990, c. P. 33.

3. Purpose

3.1. The purpose of this by-law is to regulate the use of municipal public spaces within the jurisdiction of the Municipality of Chatham-Kent to ensure the

protection of persons and property, promote the safe use and enjoyment of those spaces by the public, and support the Municipality's responsibility to maintain accessible, clean, and functional public environments. This by-law is also intended to be applied in a manner that respects the dignity and rights of all individuals, including those experiencing homelessness.

4. **General Conditions**

- 4.1. No person shall erect, cause to be erected, maintain, use, alter, or occupy an Encampment in contravention of the Encampment Response Protocol attached hereto as Appendix "A".
- 4.2. No person shall use, alter or occupy Municipal Property in contravention of the Encampment Response Protocol attached hereto as Appendix "A".

5. **Enforcement and Penalties**

- 5.1. Entry. An Officer may enter on land at any reasonable time for the purpose of carrying out an inspection to determine whether or not the by-law is complied with.
- 5.2. Obstruction.
 - 5.2.1. No person shall hinder or obstruct, or attempt to hinder or obstruct, any Officer exercising a power or performing a duty under this by-Law.
 - 5.2.2. Every person who is alleged to have contravened any of the provisions of this Bylaw, shall identify themselves to an Officer upon request. Failure to do so shall be deemed to have hindered or obstructed an Officer in the execution of such Officer's duties.
- 5.3. Orders. An Officer who finds that a person has contravened or caused a contravention of a provision of this by-law may issue an order to that person:
 - 5.3.1. setting out reasonable particulars of the contravention and the actions required to achieve compliance, which may include requiring the person to dismantle and remove any building, structure, or improvement that has been erected or placed in contravention of this by-law, or to take any other action necessary to remedy a breach of a general condition of this by-law;
 - 5.3.2. specifying the time period within which compliance must be achieved;

5.3.3. advising that if the person fails to comply with the order within the specified time, the Municipality may carry out the required work at the person's expense; and

5.3.4. advising that failure to comply with an order issued under this section constitutes an offence under this by-law.

5.4. Effective date. Any notice or document required to be given under this by-law shall be in writing and shall be deemed effective when either personally delivered to the intended recipient or posted in a conspicuous location at the site to which the notice relates. In either case, the notice shall be deemed to have been received immediately upon delivery or posting.

5.5. Compliance with order. Every person shall comply with an Order issued pursuant to this by-law within the time provided for therein.

5.6. Remedy and disposition. Where a person defaults in complying with an order issued under this by-law, the Municipality may authorize its employees, contractors, or agents to take any action, or combination of actions, necessary to bring the site into compliance with the requirements of this by-law.

5.7. Recovery of costs. The Municipality may recover the costs of carrying out any work or action authorized under this Section from the person named in the order.

6. Penalties

6.1. Offence. Every person who contravenes any provision of this by-law, including failing to comply with an order made under this by-law, is guilty of an offence and is liable to such penalties as provided for in the *Provincial Offences Act*, R.S.O. 1990, c. P.33, as amended, and the Municipal Act.

6.2. Continuing offence. Each day or part of a day that a contravention of this by-law continues shall constitute a new and separate offence.

6.3. Additional penalties. If this by-law is contravened and a conviction entered, in addition to any other remedy and to any penalty imposed by this by-law, the court in which the conviction has been entered and any court of competent jurisdiction thereafter may make an order prohibiting the continuation or repetition of the offence by the person convicted; and requiring the person convicted to correct the contravention in the manner and within the period that the court considers appropriate.

7. **General**

- 7.1. **Severability**. If any provision or part of a provision of this by-law is declared by any court or tribunal of competent jurisdiction to be illegal or inoperative, in whole or in part, or inoperative in particular circumstances, the balance of the by-law, or its application in other circumstances, shall not be affected and shall continue to be in full force and effect.
- 7.2. **Regulatory compliance**. This by-law shall not be construed to reduce or mitigate any restrictions or regulations lawfully imposed by the Municipality or by any governmental authority having jurisdiction to make such restrictions or regulations.
- 7.3. **Legislation**. Any reference to legislation in this by-law includes the legislation referred to and its amendments as well as any subsequent legislation which may replace the legislation referred to, and its amendments thereto.
- 7.4. **Conflict**. For the purposes of administering and enforcing this by-law, in the event of any conflict between its provisions and those of any existing Municipality by-law or policy relating to standards or use or occupation of public spaces, the provisions of this by-law shall take precedence.
- 7.5. **Effective date**. This by-law shall come into force on the date of passage by Council.
- 7.6. **Annual Review**. This by-law shall be reviewed on an annual basis. The review process will include consultation with individuals who have lived experience with homelessness, such as community engagement groups and advocacy organizations that support or represent persons experiencing homelessness. The purpose of the consultation is to assist with the by-law remaining responsive, informed, and aligned with evolving best practices in housing, public health, and human rights

READ A FIRST, SECOND AND THIRD TIME this _____ day of _____, 2025.

Original Signed by:

Mayor – Darrin Canniff

Clerk – Judy Smith

**An Interdepartmental Protocol for Responding to Encampments of People
Experiencing Homelessness on Public Land in Chatham-Kent
("Encampment Response Protocol")**

Background

Prevailing knowledge concerning homeless encampments indicates that encampments are not a long-term solution to homelessness¹ and that efforts are needed to deliver appropriate and accessible long-term housing solutions. However, Canadian courts have also recognized that, in the absence of sufficient available and accessible housing solutions, encampments cannot be prohibited. Governments are responsible to respond to encampments in a manner that respects human rights and promotes human well-being and safe communities.²

Removal of encampments from public spaces, regardless of whether there is a by-law that restricts that type of activity on the space, may not be possible without ensuring there is adequate shelter space for the people living in the encampment. Furthermore, the shelter spaces or other living arrangements must be sensitive to accommodating couples, must be accommodating of people with disabilities, and must operate in a manner that a person with an addiction can use and be supported by the shelter. Simply, it is not just a matter of adding more shelter beds in Chatham-Kent to respond to encampments.

Removal of an encampment must be a last resort. It can have serious consequences on the wellness of the person living in the encampment and can be traumatizing in itself with potential loss of documents, medications, and personal effects. It is important to note that the removal will mean that the individual moves to another unsheltered location and thus the encampment is moved, not solved.

There is a shortage of emergency housing in Chatham-Kent, forcing even those who wish to be sheltered to sleep outside. On any given night CK's 44 shelter beds are near or at capacity despite the over 200 CK residents experiencing homelessness.

¹ See for example UN Special Rapporteur on the Right to Adequate Housing, "A National Protocol for Homeless Encampments in Canada" (2020) at p. 21; Canadian Human Rights Commission, "Overview of Encampments Across Canada: A Right to Housing Approach" (2022) at p. 43; National Working Group on Homeless Encampments, "Homeless Encampments: Municipal Engagement Guidance" (2023) at p. 2.

² National Working Group on Homeless Encampments, "Homeless Encampments: Municipal Engagement Guidance" (2023) at p. 2.

Definition of Encampment

For the purposes of this document, an encampment refers to a temporary physical structure built as a shelter or dwelling and located on municipal property (that is not rented by the occupants of the encampment).

Encampments on Private Property

Encampments on private property are a police matter, not subject to this strategy. Property owners can contact Chatham-Kent Police Service with concerns about encampments on their property. Please see Appendix A for specifics related to encampments on Private Property.

Core Principles

1. All people of Chatham-Kent, including people experiencing homelessness, should be able to reasonably use public spaces.
2. A social service response to meet the needs of people living in an encampment on public lands is preferable to an enforcement response.
3. If reasonable social service offers are repeatedly rejected, and the criteria as established in Ontario courts are satisfied as it relates to offers of accommodation, then enforcement can be considered as a last resort.
4. It is the responsibility of the Municipality to plan and enforce policy that is in compliance with the Charter, the Human Rights Code, as well through the lens of diversity, equity, inclusion, and justice.

Strategy

The Municipality will take a general non-enforcement approach to found encampments within municipal lands, with a view to not criminalize persons living in encampments due to a lack of accessible housing. Encampments that do not meet the below criteria will be prioritised for relocation. This approach will not supersede the way in which Chatham-Kent Police Service operates, patrols, or serves the community.

Seeking to balance public and private interests while allowing for temporary shelter for persons living in encampments, encampments shall not be located in the following areas. These are areas identified as having a greater impact on the community as a whole (including in respect of health and safety, use of Municipal infrastructure, and impacts to private residences and businesses):

- On or within 100 metres from municipal playgrounds, water parks, splashpads, beaches, or sports fields
- On or within 100 metres from any elementary schools, childcare facility, assisted living facility, or other health or social service facility providing support or care services to youth or vulnerable populations including shelters
- Within 10 metres of any private property line
- On or under bridges
- On or within 5 metres of sidewalks or pedestrian paths.
- On or within 25 metres of any cemetery
- On or within 5 metres of an off-leash dog area
- On or within 5 metres of any community garden
- Structures must be freestanding and able to be moved as necessary
- In any actively used parking lot
- In or on any public-use building or structure
- In areas that block the free movement of another person on a street, public pathway, sidewalk, or other path of public travel
- On municipal land where individuals have a private easement or ownership interest, or where the Municipality owes a duty to maintain the land to the benefit or partial benefit of private individuals (i.e. beach access)
- On municipal lands in areas obstructing construction or maintenance activities

In addition, to improve the safety and well-being of encampment occupants and general public, the following safety protocols are to be followed in encampments:

- Tents/structures must be a minimum of 2 metres away from other structures while meeting all other rules to ensure fire separation and emergency service access
- There is to be no more than:
 - One tent per person
 - All personal items be stored within a tent (with exception of a bicycle and small structures for pets)

- Items in contravention to this will be removed following notice
- Zero tolerance policy for violence or other criminal acts
- Sites must maintain a level of reasonable cleanliness including:
 - No used, uncapped needles in or around the site. Sharps containers will be located in strategic sites around the community
 - No unreasonable amounts of garbage, clutter, or uncontained debris except as reasonably required for the provision of shelter. Access to garbage disposal will be located in strategic sites around the community

In all circumstances, the Municipality recognizes that hazardous conditions and activities in encampments jeopardize the safety and well-being of encampment residents and community members. Where there is an immediate risk to public or personal safety because of the activity in the encampment, or living conditions or activities in an encampment are hazardous, the Municipality may direct residents to vacate the site. Staff will use discretion when determining distances and impact.

Municipality Intervention and Response Process

The Municipality recognizes that enforcement has a significant impact on those living in encampments and their security and well-being. Potential contravention of the rules and requirements set out in this policy, and intervention by the Municipality (including removal of an encampment), will therefore be assessed by the Municipality on a case-by-case basis, prioritizing the safety and well being of people living in encampments, staff, service providers and surrounding communities.

In all cases where enforcement occurs, the Municipality will give reasonable notice to encampment residents of intended enforcement steps and will work with encampment residents to support them in transitioning to better and safer shelter/housing options.

Response Process

Municipal Property – not within prohibited area

When an encampment, temporary shelter, or tent is located on Municipal property, and not within a prohibited area as defined by the Protocol, the following process will be followed:

1. The Program Manager of Homeless Prevention (or designate) is notified of the encampment and location.
2. Once the Program Manager is notified of the location of an encampment, the Outreach Provider (herein known as “Outreach”) will be notified and asked to attend the location to offer services and referrals within 5 business days.
3. Upon initial visit to the encampment, Outreach will work to identify individuals and complete initial conversations to build rapport and identify encampment residents needs and goals. Consenting information will be documented in the Homeless Individuals and Families Information System (HIFIS) per HIFIS guidelines.
4. Outreach will continue to engage with individuals in the encampment on a weekly basis to provide supports and referrals as needed. Outreach will collaborate with Housing Services on referrals, admissions, and housing plans. This will continue to be documented in HIFIS as per HIFIS guidelines.
5. If a substantial change in circumstance occurs relating to health and safety at the encampment and is observed by Outreach in subsequent visits (such as new health or safety issues), the Response Team will be called together to discuss next steps. Municipal legal services will be consulted on any situation where enforcement or removal may be required and will provide advice on any action to be taken (i.e. removal, court application)

Municipal Property – within prohibited area

When an encampment, temporary shelter, or tent is located on Municipal property, and within a prohibited area as defined by the Protocol, the following process will be followed:

1. The Program Manager of Homeless Prevention (or designate) is notified of the encampment and location.
2. Once the Program Manager is notified of the location of an encampment, the Outreach Provider (herein known as “Outreach”) will be notified and asked to attend the location to offer services and referrals within 5 business days.
3. Upon initial visit to the encampment, Outreach will work to identify individuals and complete initial conversations to build rapport and identify encampment residents needs and goals. Consenting information will be documented in the Homeless Individuals and Families Information System (HIFIS) per HIFIS guidelines. Outreach will have available information about possible suitable and compliant sites and will consider the needs and choices of the individual(s) living within an encampment to

identify a more suitable area that meets the conditions noted within this Protocol and will advise individuals that the location is prohibited.

4. If Outreach confirms the location is in a prohibited area and the individuals do not agree to move, Outreach will notify the Program Manager of Homelessness who will call together the Response Team to discuss next steps. Municipal legal services will review any enforcement decision and provide advice to involved municipal divisions if the matter meets the tests for enforcement based on existing legal precedents, or whether an application to Court is required before any enforcement actions are taken. The Outreach provider and Housing Services will be notified of the final decision on any enforcement steps (i.e. removal, court application).
5. If removal is required, orders will be posted by the governing division of the site (ie Parks, Facilities, Public Works, Police, etc.) outlining the decision and reason. The Response Team will determine compliance timelines depending on presenting circumstances (ie. health, safety, engagement). Outreach will continue to engage with and work to provide individualized plans for encampment residents, whenever possible, including relocation, alternate sheltering options, and addressing any barriers to shelter or housing.
6. If the duration of time provided to vacate expires and individual(s) at the site have not voluntarily moved and are unwilling to move, a notice of trespass will be issued. Outreach and Social Services have no enforcement powers but will continue to request voluntary compliance. Next steps including the forceful removal of individuals will be decided on a case by case basis and may include seeking court orders.
7. Once the encampment is cleared, Outreach will notify the Program Manager of Homelessness if any further clean up is required. Relevant municipal departments or external contractors may be tasked with clearing the site of all remaining items and debris.

Encampment Support

Encampments are and will continue to be a reality for communities across the country. Until this changes, the Municipality will focus on respecting Charter rights while also providing clarity on what activities can be supported and what cannot.

To improve public health and reduce some of the negative impacts associated with encampments, the Municipality in partnership with Outreach services will facilitate access to sanitation, garbage removal and regular delivery of drinking water to found

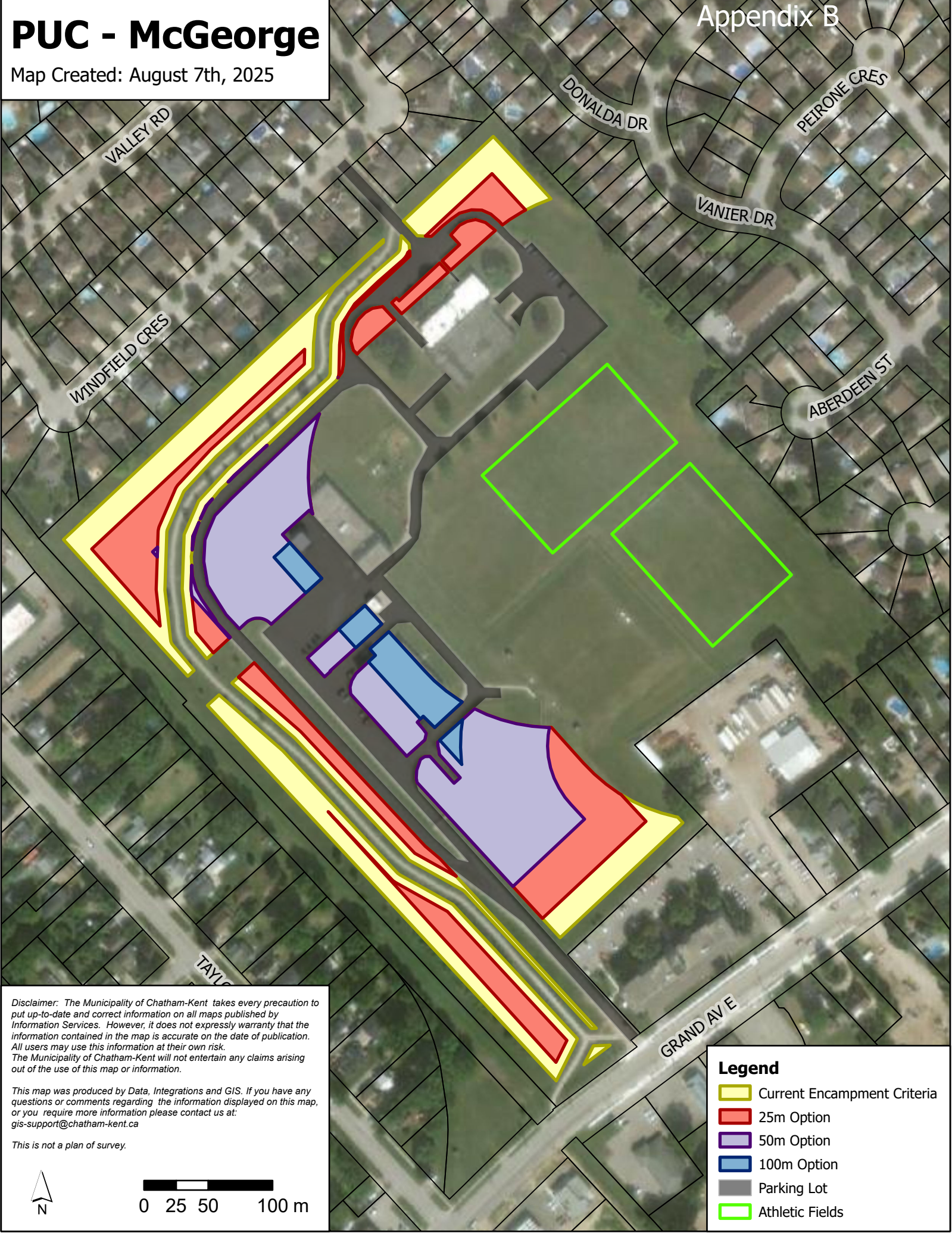
encampments in non-prohibited areas. Sharp disposal box locations will be continuously reviewed and adjusted as needed.

Third-party outreach services are contracted to provide outreach 7 days a week to connect with people living in encampments, build relationships and trust and to connect them with community resources that can assist them in exiting the encampment.

PUC - McGeorge

Map Created: August 7th, 2025

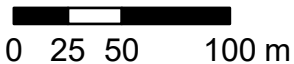
Appendix B



Disclaimer: The Municipality of Chatham-Kent takes every precaution to put up-to-date and correct information on all maps published by Information Services. However, it does not expressly warranty that the information contained in the map is accurate on the date of publication. All users may use this information at their own risk. The Municipality of Chatham-Kent will not entertain any claims arising out of the use of this map or information.

This map was produced by Data, Integrations and GIS. If you have any questions or comments regarding the information displayed on this map, or you require more information please contact us at: gis-support@chatham-kent.ca

This is not a plan of survey.



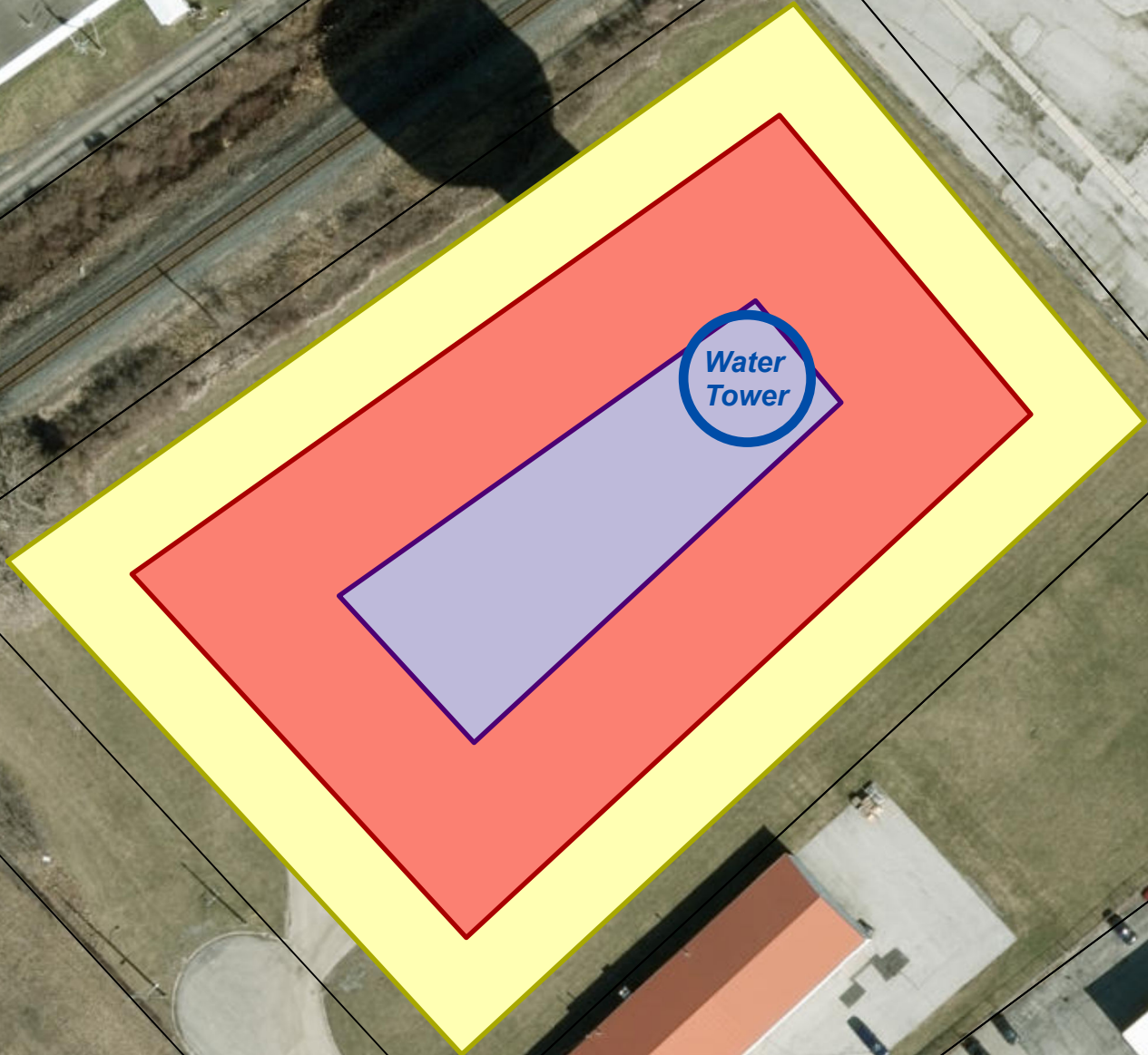
Legend

- Current Encampment Criteria
- 25m Option
- 50m Option
- 100m Option
- Parking Lot
- Athletic Fields

PUC - Water Tower(Chatham)

Map Created: August 7th, 2025

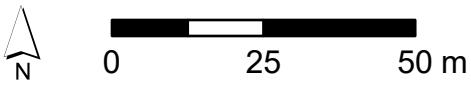
Appendix C






Disclaimer: The Municipality of Chatham-Kent takes every precaution to put up-to-date and correct information on all maps published by Information Services. However, it does not expressly warranty that the information contained in the map is accurate on the date of publication. All users may use this information at their own risk. The Municipality of Chatham-Kent will not entertain any claims arising out of the use of this map or information.

This map was produced by Data, Integrations and GIS. If you have any questions or comments regarding the information displayed on this map, or you require more information please contact us at: gis-support@chatham-kent.ca

This is not a plan of survey.



Legend

-  Current Encampment Criteria
-  25m Option
-  50m Option

Thames Grove Conservation Area

Appendix D

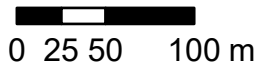
Map Created: August 7th, 2025



Disclaimer: The Municipality of Chatham-Kent takes every precaution to put up-to-date and correct information on all maps published by Information Services. However, it does not expressly warranty that the information contained in the map is accurate on the date of publication. All users may use this information at their own risk. The Municipality of Chatham-Kent will not entertain any claims arising out of the use of this map or information.

This map was produced by Data, Integrations and GIS. If you have any questions or comments regarding the information displayed on this map, or you require more information please contact us at: gis-support@chatham-kent.ca

This is not a plan of survey.



Legend

- Current Encampment Criteria
- 25m Option
- 50m Option
- 100m Option
- Parking Lot
- Boat Launch
- Disc Golf Hole